

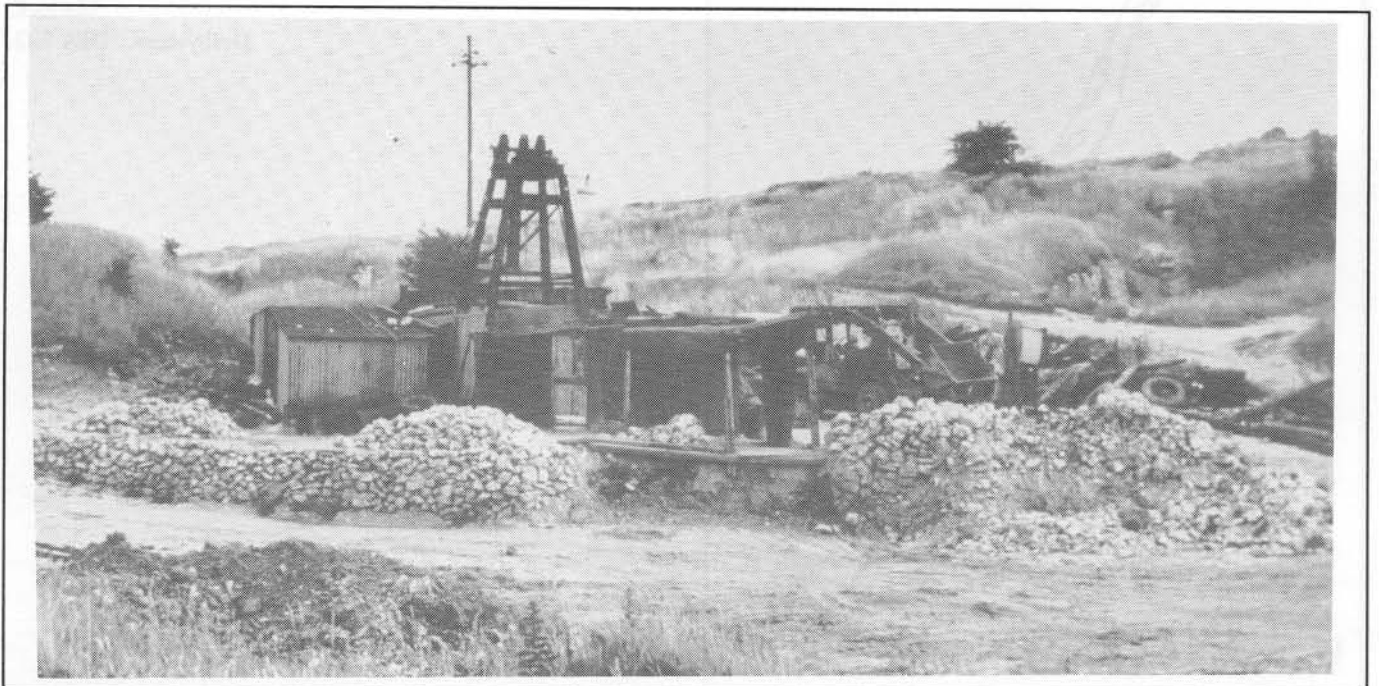
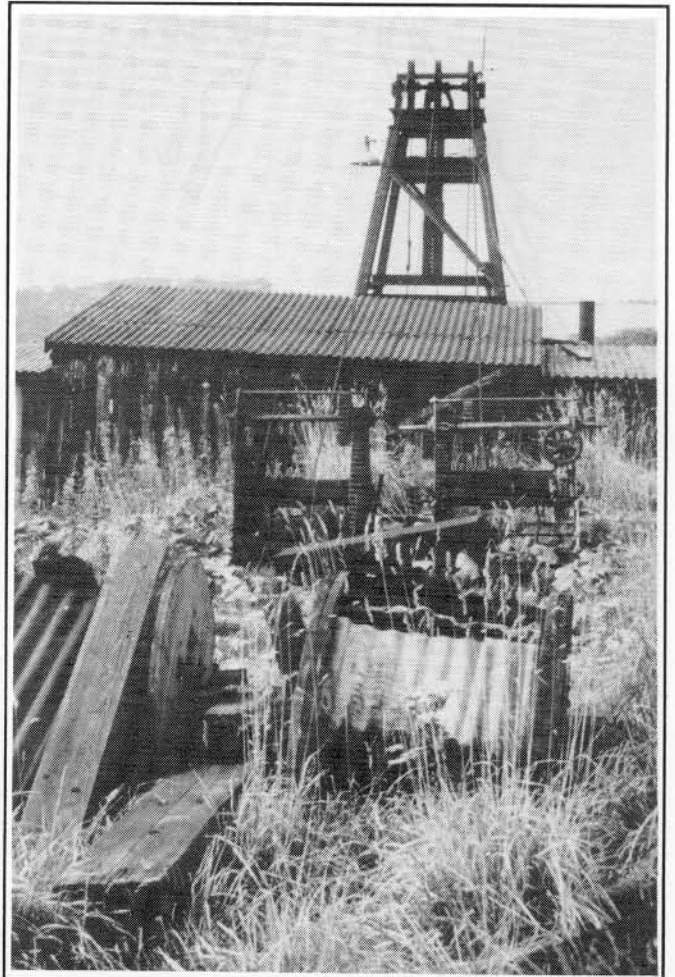
MINING RELICS AROUND CRICH IN THE 1960s

William A.S. Sarjeant

The accompanying photographs place on record various mining relics around Crich in Derbyshire as I saw them in the 1960s. Glory Mine was, to me, one of the most remarkable localities for collecting choice mineral specimens. There was shiny galena, said by some to owe its lustre to the high content of silver, though this has not been proved scientifically; crystalline and banded fluorspar of various colours, usually shades of yellow or purple; and that rather variable mineral, baryte, in a range of colours from cream through orange to brick-red. With calcite, these occurred in a variety of combinations. To use such delightful fluorspar as flux seemed a sad waste, and of course the other minerals were ground up for use elsewhere. Other minerals were less common and included occasional blende and yellow ochre. Leslie Ford, Mike Smith, my father and I visited Glory Mine repeatedly and carried away some really beautiful specimens. The limit was what we could carry by public transport as we did not have the luxury of a car! Most of the specimens collected by my father and myself are now in the Sarjeant Collection in Stoke-on-Trent Museum at Hanley, though I have a few here in Saskatoon.

1. (below) *Glory Mine headframe and buildings on Sunday 22nd July 1961. Only the headframe survived in 1992 and even that has been moved since.*

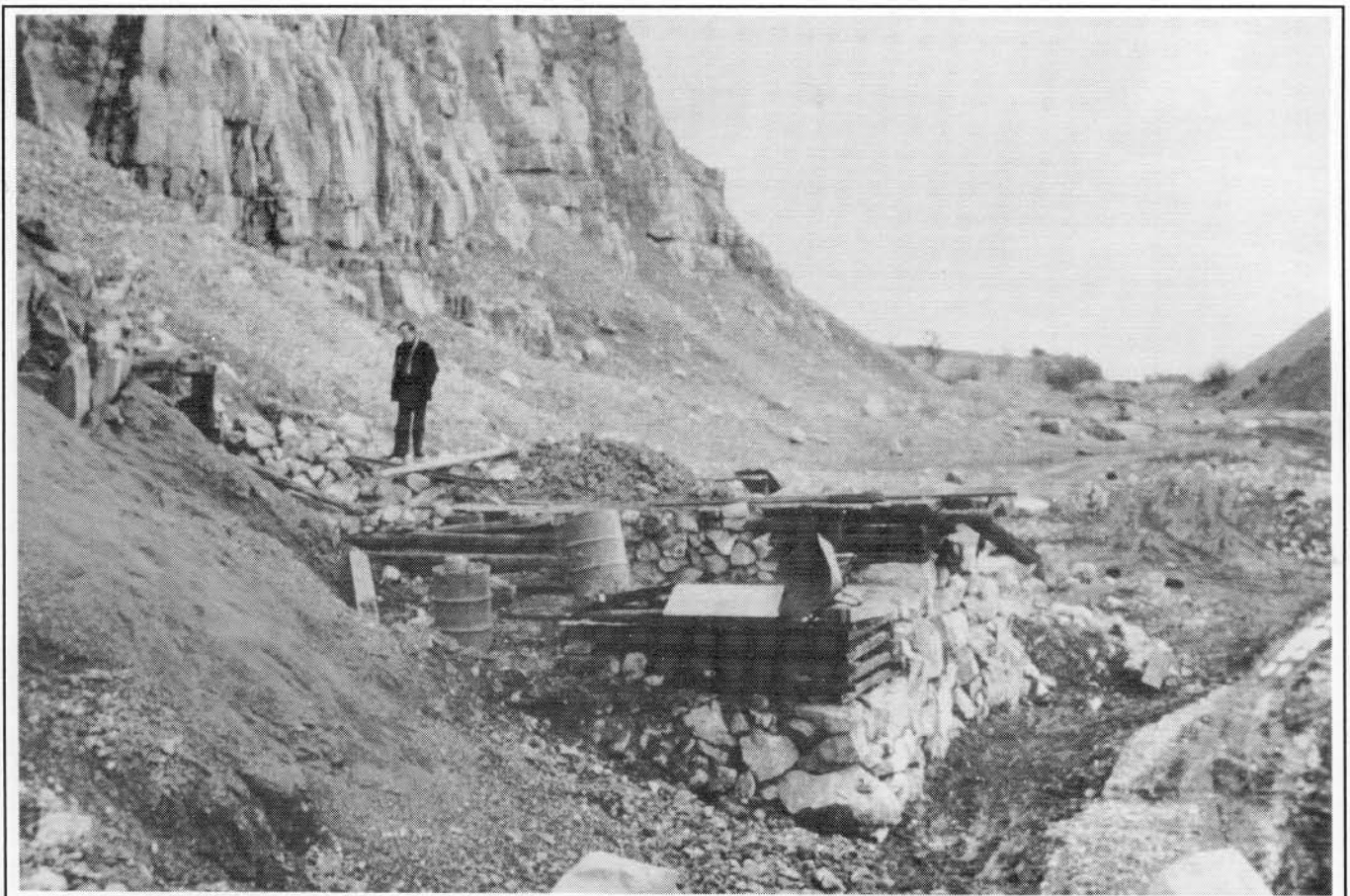
2. (right) *Glory Mine winding gear, 2nd September 1963.*





3. (left) A lead rake exposed by stripping for fluorspar on the north end of the Crich anticline, 24th October 1970.

4. (below) Relics of the coe and adit entrance of a fluorspar mine in Crich Quarry, 28th February 1965.



5. (below) An open rake with stemples near Glory Mine, 22nd July 1961.

6. (right) The ruined engine house of Old End Mine, east of Crich Stand, 22nd July 1961. It was destroyed by 1992.

W.A.S. Sarjeant,

