

*Long Rake Mine - Plant buildings and headFrame*



*Wooden winding gear on shaft on Long Rake.*

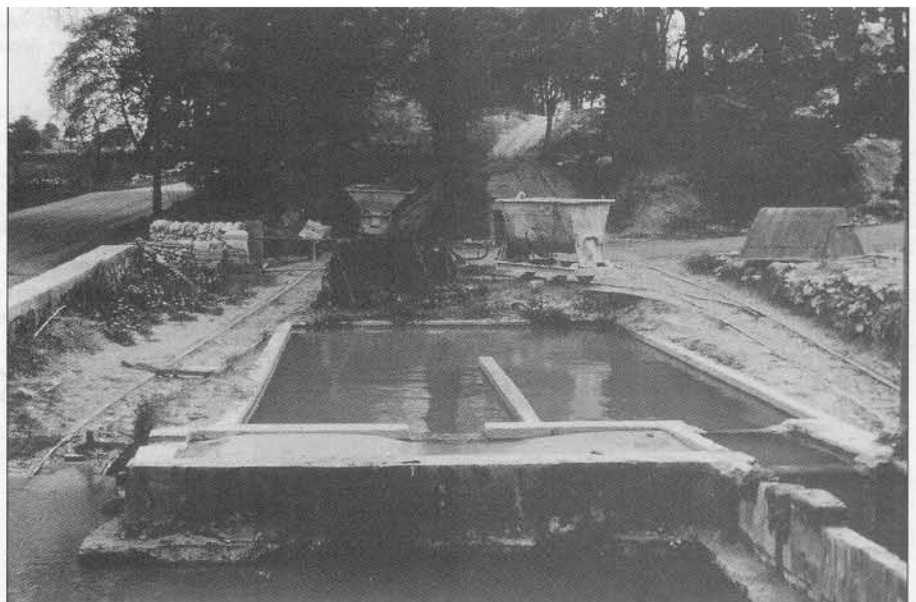
## **NOT-SO-OLD MINING HISTORY: PHOTOGRAPHS OF LONG RAKE SPAR MINE**

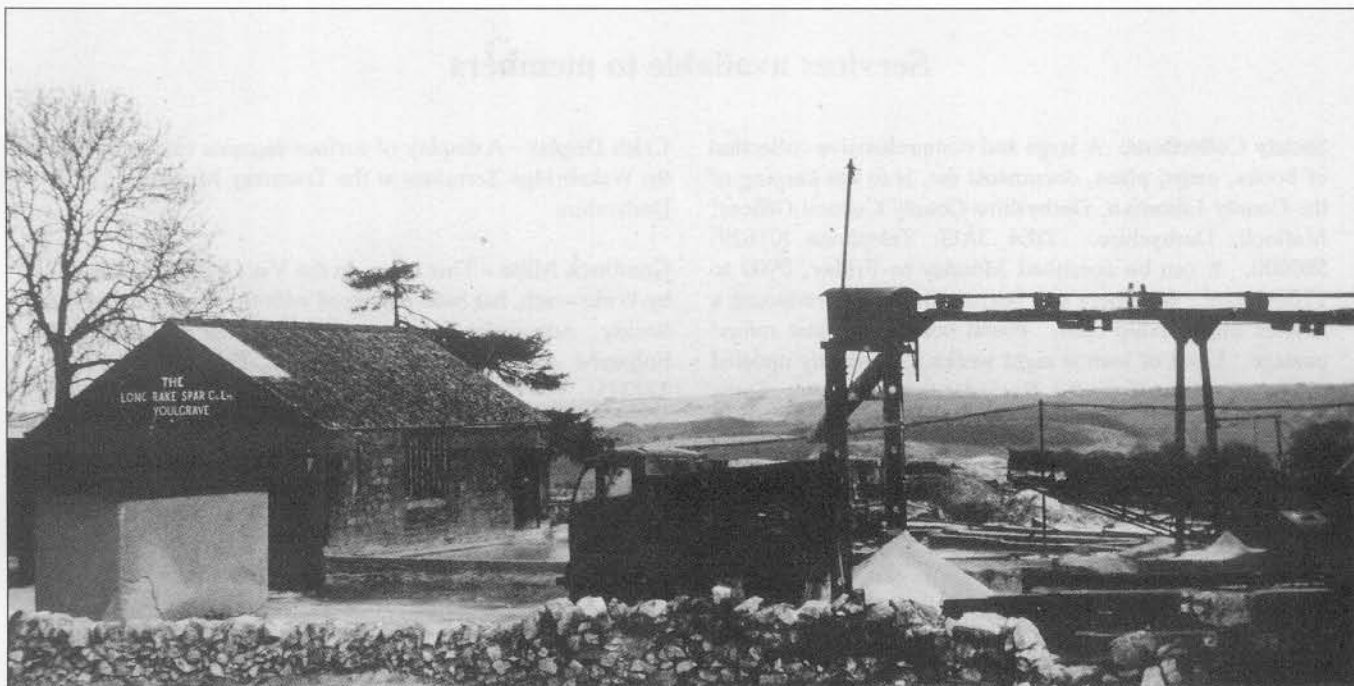
**W.A.S. Sargeant**

The five photographs were taken on 23 May 1965. I have not had the opportunity to revisit Long Rake since then, but I understand there have been substantial changes, so these photographs are a sample of recording what is rapidly becoming history.

W.A.S. Sargeant.

*Narrow-gauge railway and settling ponds at the nearby Middleton Mining Co. works, also on the Long Rake, west of the Long Rake Spar Co.*





*Long Rake Spar Co. works: office building, overhead conveyor and narrow-gauge railway.*

*Long Rake Spar Co.: Headframe through the trees; breeze-block pump-house.*

